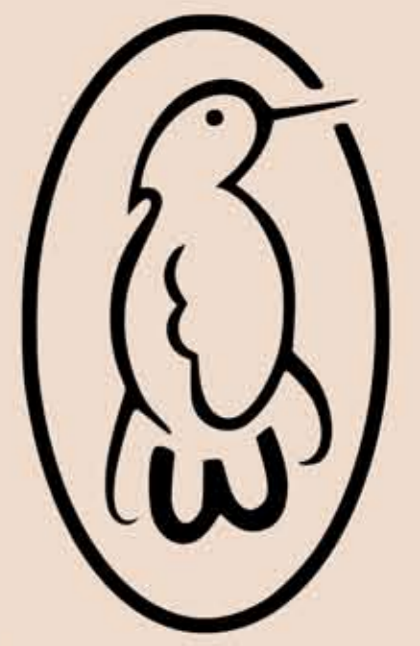
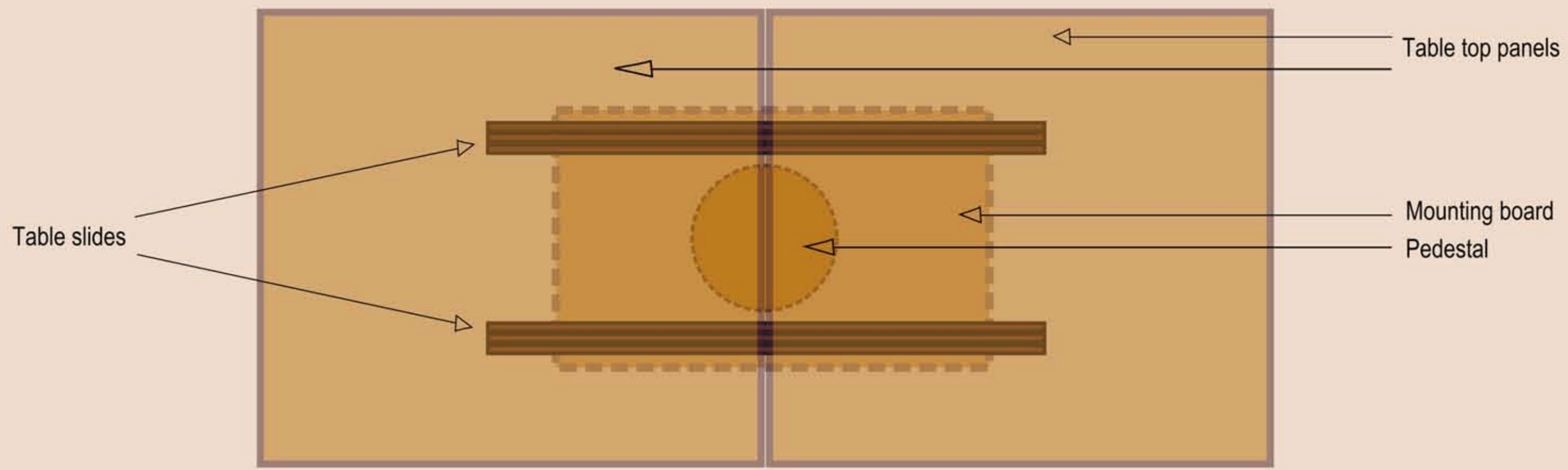




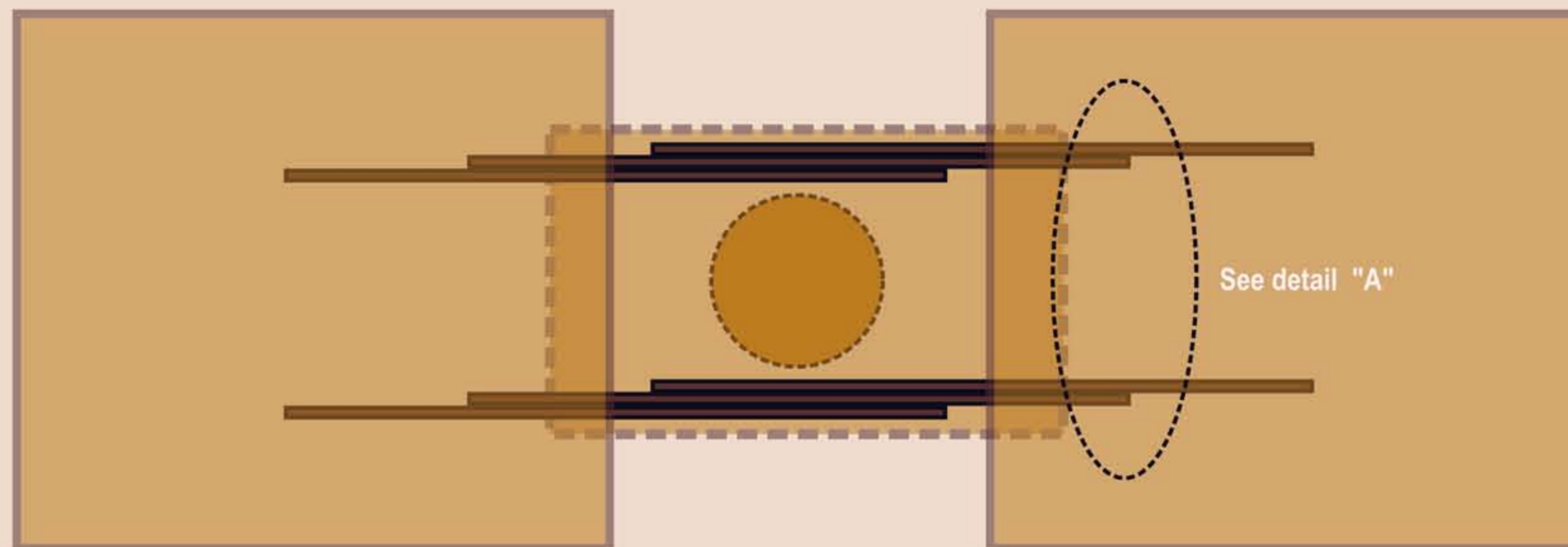
## Why is it important to use the slides in pairs? (a right and a left slide per table)



Pedestal type table seen from above



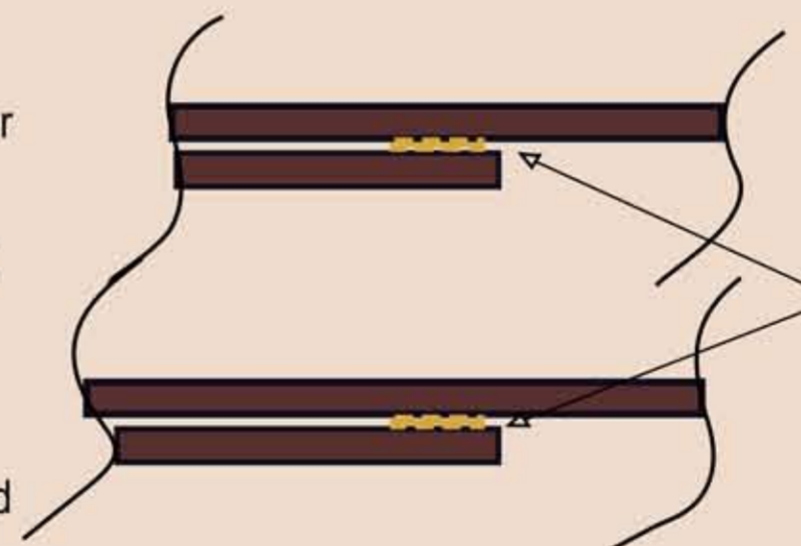
### Parallel mounting of slides (not recommended)



At the opening and closing of the table, if the user is moving the table top from left to right (lateral movement), the sections of the slides mounted parallel want to separate from each other and only the sliding blocks prevent the slide sections from disengaging.

For a slide with a rack and pinion mechanism (equalizers), the separating movement of parallel mounted slides can lead to a desynchronization of the equalizers. For a table slide without equalizers, the parallel mounting of slides creates unnecessary pressure on the sliding blocks, thus reducing the lifespan of the slides.

When closing a table with slides mounted parallel, it is also more difficult to align the dowels and their holes

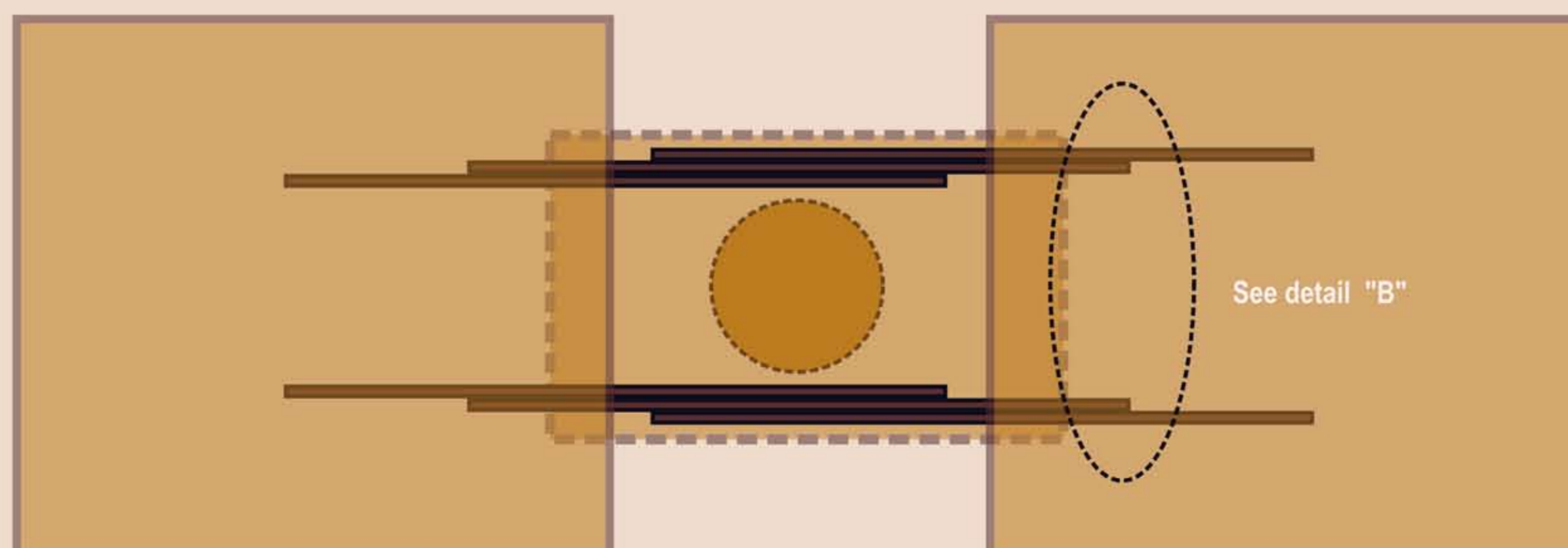


Detail "A"

Sections tend to separate from one another



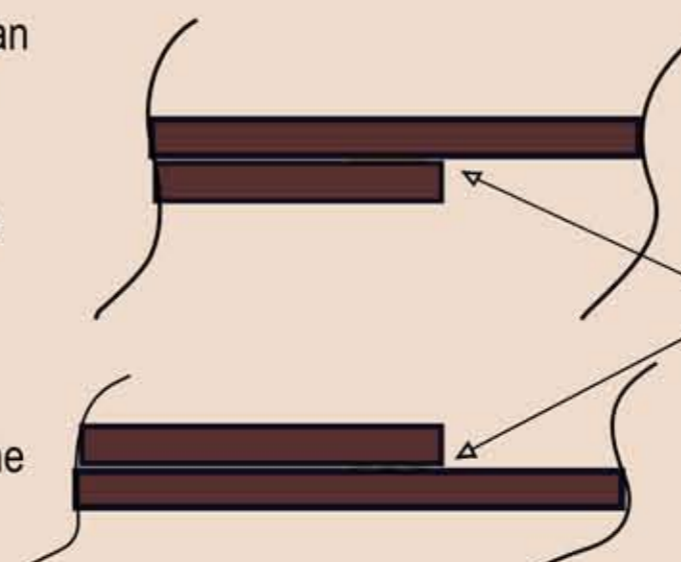
### Symmetrical mounting of slides (recommended)



On the contrary, when opening a table with slides mounted symmetrically, sections of a slide can not be separated because on the other slide, this brings the sections to tighten closely against one another, thus limiting movement.

For a slide with a rack and pinion mechanism (equalizers) symmetrical mounting eliminates the possibility of desynchronization of the equalizers since the teeth stay fully engaged in the rack. For a table slide without equalizers, this assembly reduces the pressure on the sliding blocks, thereby maximizing the life of the table slides.

When closing a table with slides mounted symmetrically, alignment is nearly perfect between the dowels and their holes, facilitating the closing of the table.



Detail "B"

The possibility of section separation of the right slide is cancelled by the tightening of the sections of the left slide, thus eliminating any allowance for a large lateral movement.